



Welcome Families!

**Explore one of the most dynamic New York neighborhoods:
The Lower East Side (LES).**

For many immigrants, the LES represents their first home in America. Throughout its history, its diverse inhabitants hailed from Holland, Germany, Ireland, Italy, Poland, Russia, Puerto Rico, Dominican Republic, and China. Whether escaping persecution, famine and war, or in search of economic opportunity, all were united in their desire to create a better life in America.

As you walk the streets of this gateway neighborhood, consider how its buildings tell the stories of its residents, past and present.



MUSEUM AT ELDRIDGE STREET FAMILY NEIGHBORHOOD ACTIVITY GUIDE

The attached map includes a selection of neighborhood sites, fun facts, and suggested activities. Use the map to pick which sites are of interest to you and your family. Whether you decide to play in outdoor parks, sample tasty treats, or visit sacred sites, your LES walk is sure to be a unique multicultural experience.

As you walk the streets, look closely to uncover this gateway neighborhood's varied layers of history. Imagine what it would have been like to live in the LES during its illustrious past and consider if it's the kind of place you would want to live in today. Take note of the language being spoken and appearing on its signs. Notice what is being sold on the streets and in the shops. Check out the street names as many provide clues to the area's past when it used to be part of James de Lancey's farm, the largest estate held by a single family in Manhattan and encompassing 120 city blocks!



To access this map via Google Maps, go to:

<http://www.google.com/maps/ms?ie=UTF8&msa=0&msid=110141668118796168040.000466750310e1ee5094a&z=15>

Some of the best ways to learn about the past is through images. Photograph your family's adventure to create your own historical record of the LES. Share your photos in our neighborhood gallery at: http://www.flickr.com/groups/museum_at_eldridge_street_families/

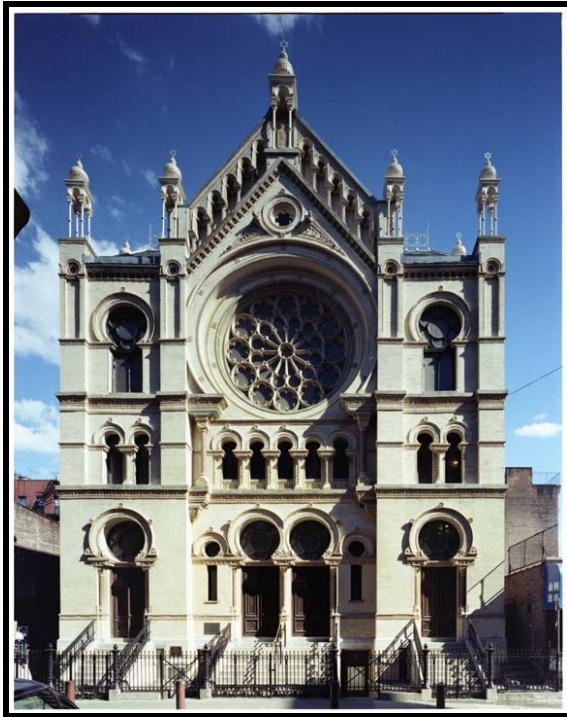


MUSEUM AT ELDRIDGE STREET FAMILY NEIGHBORHOOD ACTIVITY GUIDE





MUSEUM AT ELDRIDGE STREET FAMILY NEIGHBORHOOD ACTIVITY GUIDE



Begin your neighborhood walking tour across the street from the landmark Eldridge Street Synagogue. Today, surrounded by Chinese noodle shops and a Buddhist temple, the Eldridge Street Synagogue stands as a great vestige of the large wave of East European Jewish immigration a century ago. The plentiful stars of David decorating the building's façade proclaim its Jewish identity and evoke the time when this area was known as Jewtown instead of Chinatown. In its heyday, Eldridge Street was filled with Jews, and Yiddish could be seen in storefront signs, and heard on the streets.

As you explore the neighborhood, you will find many clues to its former tenants and its historic evolution. From this vantage, you can also glimpse life beyond the Lower East Side in the Chrysler building to the north and the Manhattan Bridge to the south.

VISIT the Museum at Eldridge Street for a guided tour to learn more about the Jewish immigrants living in the LES. See for yourself the Yiddish signs that used to hang in the neighborhood and read headlines from the popular newspapers. Uncover the history of the building's magnificent architecture, along with the story of the immigrants who built it and gathered here on our *Preservation Detectives Family Program*, every Sunday at 1pm.

For more information, visit www.eldridgestreet.org or call 212.219.0302x2.



MUSEUM AT ELDRIDGE STREET FAMILY NEIGHBORHOOD ACTIVITY GUIDE

CULINARY LANDMARKS

- 1. Aji Ichiban** 23 East Broadway, between Catherine and Market.
Aji Ichiban is Japanese for “superior taste.” This candy store is filled with surprising munchies ranging from preserved fruit, to fish and flowers. Sample them all for free and see what new snack might become your favorite.
- 2. Alleva** 188 Grand, corner of Mulberry.
When you enter Alleva, your nose fills with the aroma of imported cheeses, salamis, and sausages and your eyes can feast upon the original tiling and painted glass advertisements of the oldest cheese market in America, established in 1892.
- 3. Chinatown Ice Cream Factory**
65 Bayard, between Mott and Bowery.
The Chinatown Ice Cream Factory adds a Chinese twist to American’s most popular dessert. Flavors range from traditional vanilla to green tea, red bean, and wasabi.
- 4. DiPalo's Fine Foods** 200 Grand, at the corner of Chrystie.
Savino DiPalo opened this latteria, or dairy store, in Little Italy in 1910. Today his grandson Lou continues his tradition and helps to preserve the foods of his homeland, Basilicata, Italy by importing its cheese, olive oil and other fine foods.
- 5. Economy Candy** 108 Rivington, between Essex and Ludlow.
Known as the “Noshers’ Paradise,” Economy Candy has been serving up snacks since 1937. This old-time store still sells the bulk treats of the past, along with contemporary confections.
- 6. Essex Street Market**
80 Essex, between Delancey and Rivington.
When it opened in January of 1940, this market transformed the LES streets bringing its bustling sidewalk economy indoors. The Market originally housed 475 stalls and spanned several more blocks. Today, merchants’ wares range from yucca to ethnic jewelry, hand-rolled truffles, cheese, and fresh fish. Closed on Sundays.

- 7. Ferrara’s Bakery & Café** 195 Grand, between Mulberry and Mott. For four generations, the Ferrara family has been making Italian desserts like cannoli, stogliatella, gelati and more right here since 1892.
- 8. Golden Unicorn**
18 East Broadway, between Catherine and Market.
Dubbed the “Dim Sum Palace” because of its fantastic Dim Sum offerings carted around by waitresses and its gold and pink color scheme, Golden Unicorn is an ultimate Chinatown experience.
- 9. Joe Shanghai** 9 Pell, between Doyers and the Bowery.
Joe is famous for perfectly symmetrical little dumplings called Xiao Long Bao, whose shape resembles a pagoda. These tender pouches are freshly made to order and arrive at the table in piping hot bamboo steamers.
- 10. Katz’s Delicatessen** 205 Houston, at Ludlow.
Established in 1888 as a small kosher butcher shop, today Katz’s is the oldest deli in New York. Although no longer kosher, Katz’s remains an iconic reminder of the Jewish LES. Make sure to explore its façade and interior design to see the many people that enjoyed their salami throughout the years.
- 11. Kossar’s Bialys** 367 Grand, between Suffolk and Clinton.
Bialy is a small roll. It is also the abbreviated Yiddish word for a person from Białystok, a city in Poland where some claim the food originates. Kossar’s has been handcrafting its prizewinning bialys along with bulkas, pletzels and sesame sticks for over 65 years. Closed on Saturdays.
- 12. Noah’s Ark** 399 Grand, between Suffolk and Clinton.
Noah’s Ark has become an iconic reminder of the thriving Jewish community of the LES. It is the only kosher deli in the area. Closed on Saturdays.

Pushcart Shopping



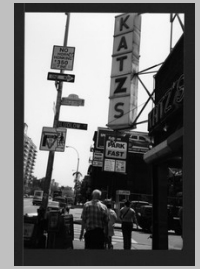
Courtesy of NYPL

Essex Street Market



Courtesy of NYPL

Katz's Deli



Courtesy of NYPL

Dumplings



Courtesy of Public Domain



MUSEUM AT ELDRIDGE STREET FAMILY NEIGHBORHOOD ACTIVITY GUIDE

13. Shalom Chai Pizza 357 Grand, off Clinton.

Shalom Chai is a popular hang-out for the Orthodox Jewish community living in the area. Stop in to chat with the old-timers and to enjoy a quick slice. *Closed on Saturdays.*

14. The Pickle Guys, 49 Essex, between Grand and Hester.

Essex Street used to be the pickle capital of the United States. Today The Pickle Guys is carrying on this eastern European tradition, filling its barrels with a variety of pickled delights.

15. Vanessa's Dumpling House

118 Eldridge, between Broome and Grand.

Vanessa's serves tasty and inexpensive Chinese dumplings along with soups and sesame pancake sandwiches. Order your food and watch it made from behind the counter. You can even purchase bags of frozen treats to make at home.

16. Yonah Schimmel Knish Bakery

137 Houston, between Forsyth and Eldridge.

Rabbi Yonah Schimmel, a Bulgarian immigrant couldn't make enough money from his religious profession and opened this knishery in 1910. Home of The World's Finest Knishes, this bakery offers the traditional Eastern European potato and kasha knish, along with Spanish influenced varieties like jalapeno, testifying to changing LES tastes.

FAMOUS ATTRACTIONS

17. Big Jack's Headquarters

286 Broome, between Eldridge and Allen.

Big Jack Zelig was a notorious gangster in New York's underworld of 1900s. He started out as a pickpocket, then became a jewelry thief, and by the early 20th century, headed a gang that lorded over the LES.

18. Educational Alliance (EA) 197 East Broadway at Grand.

The EA is a community center established in 1889 to help immigrants "Americanize." The center offered language and art classes, a free library, and even dance and cooking classes. This building, which opened in 1891, still serves the largely immigrant population of the neighborhood.

19. Forward Building

175 East Broadway between Jefferson and Rutgers.

The most popular socialist Yiddish daily newspaper the *Forverts*, or *Forward*, was founded in 1897 by Abraham Cahan. This building, its former home, was a popular meeting place for political activists and many would gather here on election night to view results projected on its white facade. Today, the building has been converted into condominiums, but you can still see signs of its past use in its Yiddish name written under the clock, as well as in the golden medallions of socialist icons Marx, Engels, Lassalle, and Bebel.

20. Henry Street Settlement

265 Henry, between Pitt and Grand.

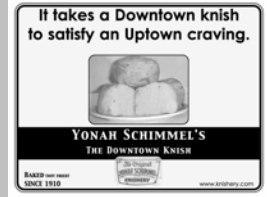
Henry Street has been serving the LES community for over a century. Founded by Lillian Wald in 1893, the institution was dedicated to teaching health and hygiene, along with English and arts to the new immigrants. Henry Street nurses were famous for traveling from tenement rooftop to rooftop to treat patients.

21. Italian American Museum(IAM)

155 Mulberry, at Grand.

Located in an old bank in the center of Little Italy, IAM presents the history and heritage of the Italians in America. Visit to learn about Italian culture and its contributions to American life.

Yonah Schimmel Knish Bakery



Courtesy of www.knishery.com

Education Alliance



Courtesy of Library of Congress

Forward Building



Courtesy of Municipal Archives

Forward Newsboys



Courtesy of Library of Congress



MUSEUM AT ELDRIDGE STREET FAMILY NEIGHBORHOOD ACTIVITY GUIDE

22. Jarmulowsky's Bank 58 Canal, southwest corner of Orchard.

Constructed in 1912, this was once the tallest structure on the LES. Its founder, Sender Jarmulowsky, whose name still appears under the building's capital, was the founding president of the Eldridge Street congregation. This bank served the community until a disastrous run in 1917. When its doors closed, it owed millions in debt.

23. Loew's Canal St. Theater 31 Canal, between Ludlow and Essex.

This popular movie theater, built in the 1920s, was one of the few air-conditioned buildings on the LES. Although it is no longer used as a theater, if you look up at its terracotta-glazed windows, you can notice signs of its original purpose.

PLACES TO PLAY AND SEE

24. The Lower East Side Tenement Museum

108 Orchard, between Broome and Delancey.

Experience the harsh conditions of tenement living. Visit the museum and hear the stories of immigrants who lived in 97 Orchard Street, a tenement built in 1863.

25. Museum of the Chinese in the Americas (MOCA)

215 Centre, at Grand.

Explore the history and heritage of the Chinese in America. The Museum's collection comprises more than 60,000 artifacts and includes interpretive exhibits highlighting Chinese culture. MOCA will open this new building in Spring 2009.

26. New Museum of Contemporary Art

235 Bowery, at Prince.

The first art museum ever constructed from the ground up in downtown Manhattan, the New Museum is a home for contemporary art and an incubator for new ideas. Its top floor Sky Room offers an exciting panoramic view of the neighborhood.

27. Sara Delano Roosevelt Park

Between Houston and Canal and Forsyth and Chrystie.

Named for philanthropist and Presidential mother Sara Delano Roosevelt in 1934, the park remains a vibrant common ground for LES residents. The park offers playing surfaces for several sports, including tai chi and roller skating.

28. Seward Park Library 192 East Broadway.

Constructed with funds donated by Andrew Carnegie in 1909, this library was so popular that its hours ranged well into the night due to heavy demand. It even had a rooftop reading area to accommodate the many people looking for a quiet space to read.

29. Seward Park 192 East Broadway, at Essex.

When it opened in 1903, Seward Park had the first permanent, municipally built playground in the USA. At that time, the concept of children's play was novel and many kids worked in the city's teeming sweatshops. The Park is named for William Henry Seward, an American statesman, perhaps most famous for arranging the 1867 purchase of Alaska. This bargain, once denounced as "Seward's folly," inspired playground equipment. See if you can find the Alaskan seals and a husky named Togo. Today, having undergone a renovation, Seward Park is one of the most popular areas for families in the neighborhood.

SACRED SITES

30. Beth Hamedrash Hagadol

60 Norfolk, between Grand and Broome.

Built in 1852 as a Baptist church, this gothic revival building was purchased in 1885 by congregants who had recently broken away from the congregation that formed Eldridge Street. It was one of the largest synagogues on the LES.

Seward Park



Courtesy of NYPL

Sender Jarmulowsky



Courtesy of MAES

Sara Delano Roosevelt Park



Courtesy of NYPL

Chinese Immigrants



Courtesy of MOCA



MUSEUM AT ELDRIDGE STREET FAMILY NEIGHBORHOOD ACTIVITY GUIDE

31. Bialystoker Synagogue 7 Willett Street, off Grand.

Built in 1826, the federal-style building originally housed a Methodist church and served as a stop on the Underground Railroad. Go inside and discover the old ladder leading to an attic where slaves hid during the Civil War.

32. Buddhist Temple Association

20 Eldridge, between Canal and Division.

Look closely at the materials used in this building. Notice the red ironwork revealing its past use as a firehouse in the mid 1800s. Since then, it has housed a wagon wheels workshop studio, jewelry and eyeglass shop, and a temple.

33. Church of Grace To Fujianese

133 Allen, between Rivington and Delancey.

This church is located on the former site of a municipal bath house built in 1905. At that time, many of the crowded tenement buildings housing immigrants did not have running water. Imagine having to leave your home to wash.

34. Eldridge Street Synagogue

12 Eldridge, between Canal and Division.

Eldridge Street is the first great house of worship built by eastern European Orthodox Jews in America. This National Historic Landmark was recently restored to former grandeur. Make sure to explore its exhibit of the neighborhood and discover how the LES looked 100 years ago.

35. First Roumanian American Congregation

89 Rivington, between Orchard and Ludlow.

The red-brick synagogue that used to stand on this empty lot was condemned and dismantled after its roof collapsed in 2007. You can still see where its doorway once stood on the very right side and its Talmud Torah religious school on the left side of the adjacent building.

37. Kehila Kedosha Janina

280 Broome, between Eldridge and Allen.

Built in 1927 by a congregation whose members had emigrated from the town of Janina, Greece in 1906, this is the only Romaniote synagogue in the Western hemisphere.

38. Mahayana Temple Buddhist Association

133 Canal between Chrystie and Bowery.

Within this pagoda guarded by lions, lies the largest Buddha in the city, a behemoth 16-foot gold statue. For a dollar donation, you can get your very own fortune forecast, rolled and rubber-banded.

38. Mesivta Tifereth Jerusalem (MTJ)

145 East Broadway, between Rutgers and Pike.

Chartered in 1907, MTJ attained great distinction beginning in the mid-1940s, as its head, Rabbi Moshe Feinstein, became one of the most important Talmud sages in America. Its name is written in both Hebrew and English characters on the building's facade.

39. St. Augustine's Episcopal Church

290 Henry, between Montgomery and Jackson.

Built in 1829, this church's design included two slave galleries at the rear of the balcony on each side of the main tower, providing testimony to the African experience in New York.

40. St. Teresa's Church

141 Henry, between Rutgers and Pike.

There has been a church on this site since 1798. The current building, built in 1841 as a Presbyterian church, has been used as a Catholic church since 1863. Today, masses are held in all three of the area's main languages: English, Spanish, and Chinese.

St. Augustine's Church



Courtesy of NYPL

Eldridge Street Synagogue



Courtesy of Century Magazine

St. Teresa's Church



Courtesy of Library of Congress

Beth Hamedrash Hagadol



Courtesy of Public Domain

When this image was taken in 1902, the LES was considered to be the most crowded place on Earth!

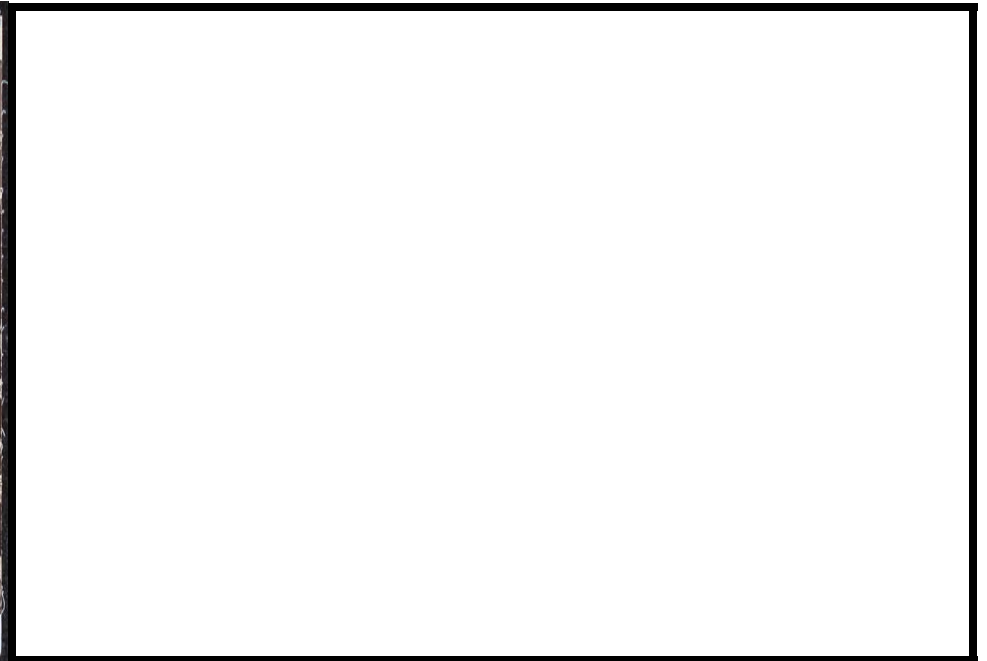
Walk along Hester Street, pictured below.

How does this historic image compare with what you see today?
In what ways have the streets remained the same? How do they differ?

Imagine what the streets might look like in another hundred years.
Use the space below to draw or write about the street scene circa 2100.



A Scene in the Ghetto, Hester Street, 1902. © Falk



A scene in Hester Street, circa 2100. ©



MUSEUM AT ELDRIDGE STREET FAMILY NEIGHBORHOOD ACTIVITY GUIDE

EXPLORE THE NEIGHBORHOOD WITH ALL YOUR SENSES!

Note what you see, hear, touch, smell, and taste around the neighborhood.

I SEE	I HEAR	I TOUCH	I SMELL	I TASTE



MUSEUM AT ELDRIDGE STREET FAMILY NEIGHBORHOOD ACTIVITY GUIDE

COMPARE THE LOWER EAST SIDE TO YOUR NEIGHBORHOOD!

What elements are the same? Which differ?

NEIGHBORHOOD ELEMENT	LOWER EAST SIDE	WHERE YOU LIVE
Buildings		
Restaurants		
Stores		
Signs		
Parks and Trees		



MUSEUM AT ELDRIDGE STREET FAMILY NEIGHBORHOOD ACTIVITY GUIDE